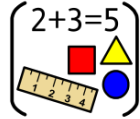


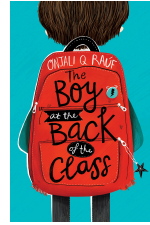
Maths

We are finding fractions

- Reviewing fractions
- Fractions greater than 1
- Decimals



Reading



- Vocabulary
- Fluency
- Retrieval
- Inference
- Deduction
- Summarisation

Writing

narrative	persuasion
<ul style="list-style-type: none">• Direct speech• Personal pronouns• Expanded noun phrases	<ul style="list-style-type: none">• Opening and closing paragraphs• Fronted adverbials

Science Why do materials change state?

- Observe changes of state
- Understand evaporation and condensation
- Describe the stages in the water cycle



Humanities: Extreme Earth Where is the most extreme place on Earth?

- Describe and understand key aspects of physical geography
- earthquakes, volcanoes, mountains



Year 4 Summer 1

RE: Sikhism What is the best way for a Sikh to lead a good life?

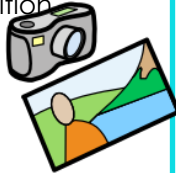
Revisiting the Khalsa and the 5 Ks and how these help Sikhs live a good life, the Sikh Golden rules, Seva/Sewa (selfless service), vand ke chanka (vand= sharing, chanka =food), how Sikhs show respect to the Guru Granth Sahib.



Computing Creating media

Photo editing

- changing the composition of an image
- selecting tools
- recognising the not all images are real
- evaluating changes to an image



The Big Questions

- Why do materials change state?
- Where is the most extreme place on Earth?



Music: Painting with Sound

- Atmosphere, place emotion
- Ensembles
- Layered pieces
- composition

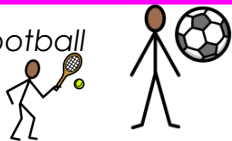


Spanish Presenting Myself



PE Tennis and Football

- Serve techniques
- Return techniques
- Rallying
- Kicking with different areas of the foot
- Introduction to goalkeeper



Art and DT: Textiles

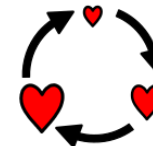
Designers: Nancy Nicholson and Marion Tuu'luq

- Seam allowance
- Create a simple pattern
- Join fabrics using running stitch, over sewing, backstitch, stitched appliqué
- Explore fastenings and sew on buttons



PSHE: Relationships

- Relationship web
- Love and loss
- Memories
- Are animals special?
- Special pets



Homework

Mathematics and writing homework is set on Google Classroom on Thursday to be returned the following Tuesday.

Children are expected to read for 20 minutes and to practise maths facts and spellings daily.

